



Application

- It is used for water circulation in small and medium-sized swimming pools. Slightly dirty water with solids in suspension can be perfectly filtered.

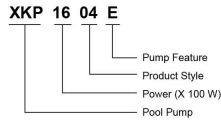
Pump

- Engineering plastic pump body
- Medium temperature: 5 - 50°C
- Environmental temperature: ≤40°C
- Max. suction: 3.5 m

Motor

- Motor with copper or aluminum winding
- Built-in thermal protector for single phase motor
- Insulation class: F
- Protection class: IPX5

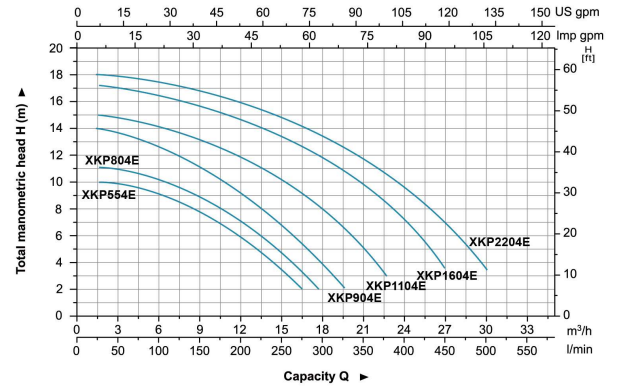
Identification Codes



Technical Data

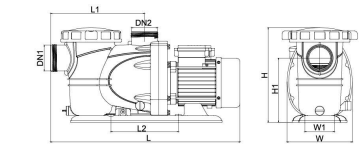
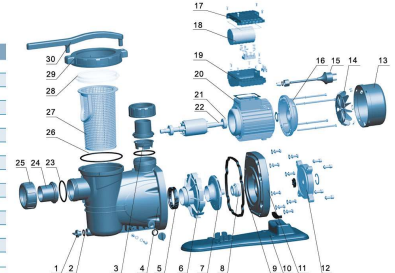
MODEL	POWER (P _i) W	Q (m ³ /h) Q (l/min)	H (m)													
			3	6	9	12	15	18	21	24	27	30				
XKP554E	600	9	9.7	8	6	3.2	0.5	-	-	-	-	-	-	-	-	-
XKP804E	800	10.3	10.8	10.3	8.8	7	4.5	1.5	-	-	-	-	-	-	-	-
XKP904E	900	11.1	13.2	12.3	11.1	9.2	6.5	3.4	0.2	-	-	-	-	-	-	-
XKP1104E	1100	12	14.8	14.2	13.2	12	10.3	8	4.8	-	-	-	-	-	-	-
XKP1604E	1600	14.5	16.8	16.3	15.5	14.5	13.5	12	9.6	7	3.5	-	-	-	-	-
XKP2204E	2200	16	17.8	17.3	16.5	16	14.8	13.4	11.7	9.5	6.5	3.3	-	-	-	-

Hydraulic Performance Curves



Materials Table

No.	Part	Material	No.	Part	Material
1	Drive plug	PP	16	Rotor cover	ZL102
2	O-ring	NBR	17	Capacitor cover	ABS
3	Valve body	PP	18	Capacitor	-
4	Pump body	PP	19	Terminal box	ABS
5	Diffuser seal washer	NBR	20	Stator	-
6	Diffuser	PP	21	Bearing	-
7	Impeller	PPO	22	Rotor	-
8	Mechanical seal	Graphite/Diamond	23	O-ring	NBR
9	Sealing ring	NBR	24	Connector	PVC
10	Bottom board	PP	25	Nut	ABS
11	Plastic support	PP	26	O-ring	EPDM
12	Pump support	ZL102	27	Sieve	PP
13	Fan cover	PP	28	Pump cover	PC
14	Fan	PP	29	Pump cover nut	PAG
15	Cable	30	Wrench	PP	-



Dimension

Model	DN1	DN2	L (mm)	W (mm)	H (mm)	L1 (mm)	L2 (mm)	H1 (mm)
XKP554E	50	50	554	190	276	274	197	187
XKP804E	50	50	554	190	276	274	197	187
XKP904E	50	50	554	190	276	274	197	187
XKP1104E	50	50	554	190	276	274	197	187
XKP1604E	50	50	584	190	276	274	197	187
XKP2204E	50	50	584	190	276	274	197	187

Package Information

Model	GW (Kgs)	L (mm)	W (mm)	H (mm)	Quantity (PCS/20 TEU)
XKP554E	10.4	585	220	290	816
XKP804E	11.1	585	220	290	816
XKP904E	12.1	585	220	290	816
XKP1104E	12.8	585	220	290	816
XKP1604E	16.1	615	230	290	744
XKP2204E	17.7	615	230	290	744



Available with:

FILTRA CONSULTANTS AND ENGINEERS LTD.

Gala No. 2 & 3, Ground Floor, Neminath Industrial Estate No. 2, Navghar, Vasai (East), Dist.: Palghar - 401 219
Tel.: +91 8691009127/26 Email: filtraw@gmail.com Website: www.ewatertreatmentindia.com

