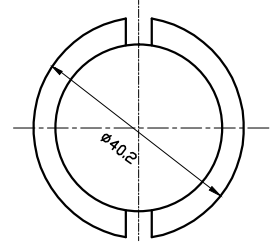
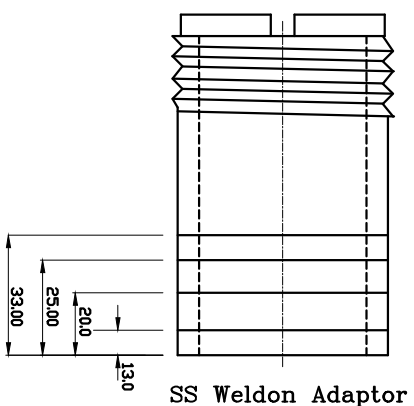


SS Weldon Fitting BS10 T D optional ANSI

Extra long Insertion sensor



| Line Size | Sensor Type | Weld line Dist.(D) |
|-----------|-------------|--------------------|
| 40 NB     | 90mm        | 33mm               |
| 50 NB     | 90mm        | 13mm               |
| 65 NB     | 90mm        | 13mm               |
| 80 NB     | 90mm        | 20mm               |
| 100 NB    | 120mm       | 13mm               |
| 125 NB    | 120mm       | 25mm               |
| 150 NB    | 160mm       | 20mm               |



SS Weldon Adaptor

Note:-  
40 NB Fitting use standard TEE

| REV. | DATE | Revision Note                              | Reason For Change Rev. | Chek.             | Sign |
|------|------|--|------------------------|-------------------|------|
|      |      | Data sheet Insertion sensor with ss weldon |                        | Prepd. BY- Rupali |      |
|      |      |  |                        | Chkd. BY- Mulla   |      |
|      |      |  |                        | Appd. BY- Juhi    |      |