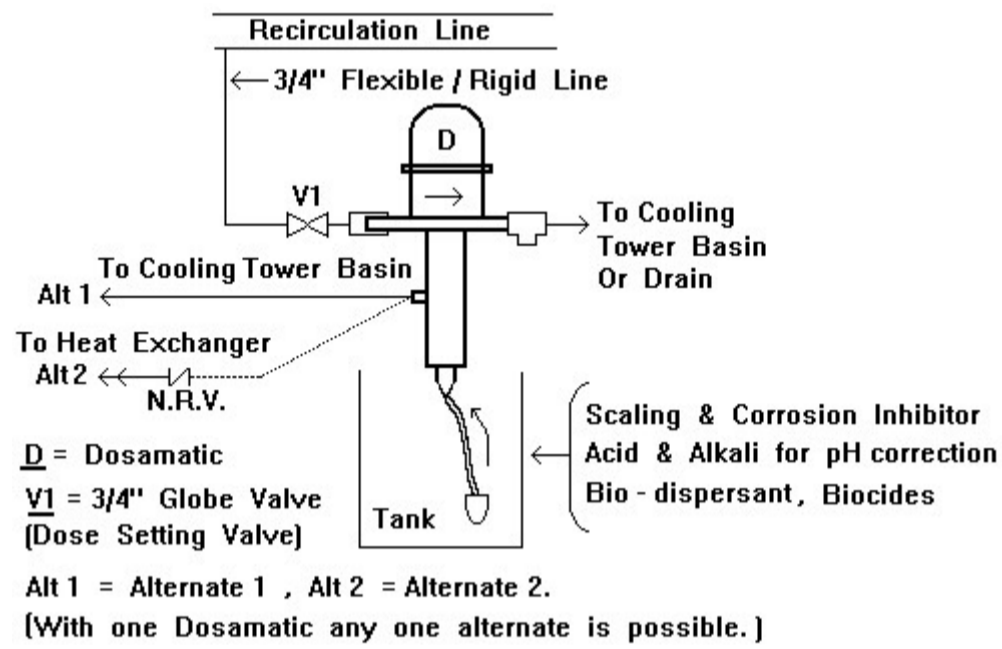
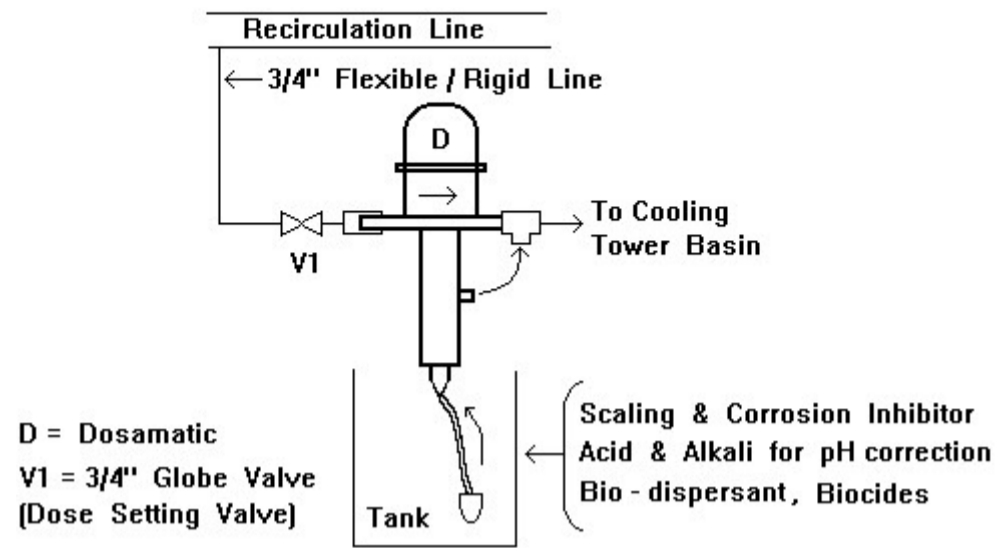
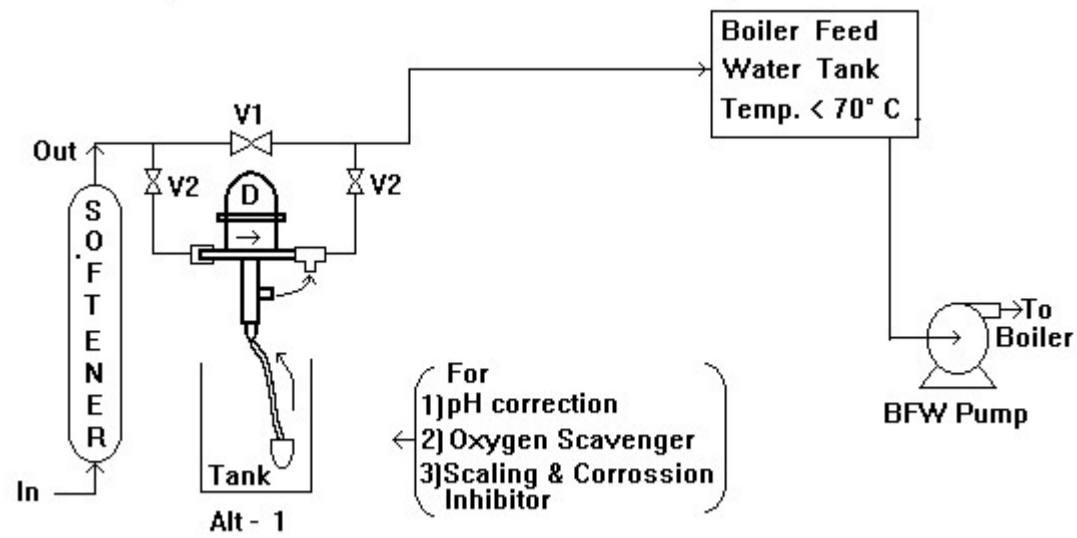


INSTALLATIONS OF DOSAMATIC

A) For Cooling Water Treatment Chemicals.



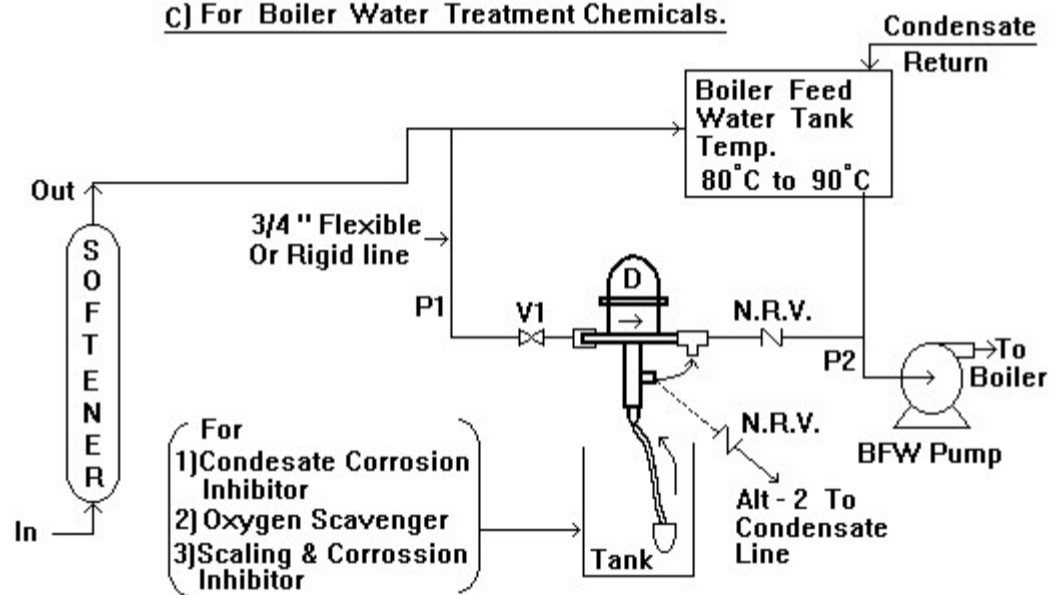
B) For Boiler Water Treatment Chemicals.



Alt - 1 = Alternative 1,

D=Dosamatic ,V1 = Globe / Ball Valve (Dose Setting Valve), V2 = 3/4" Ball Valve

C) For Boiler Water Treatment Chemicals.

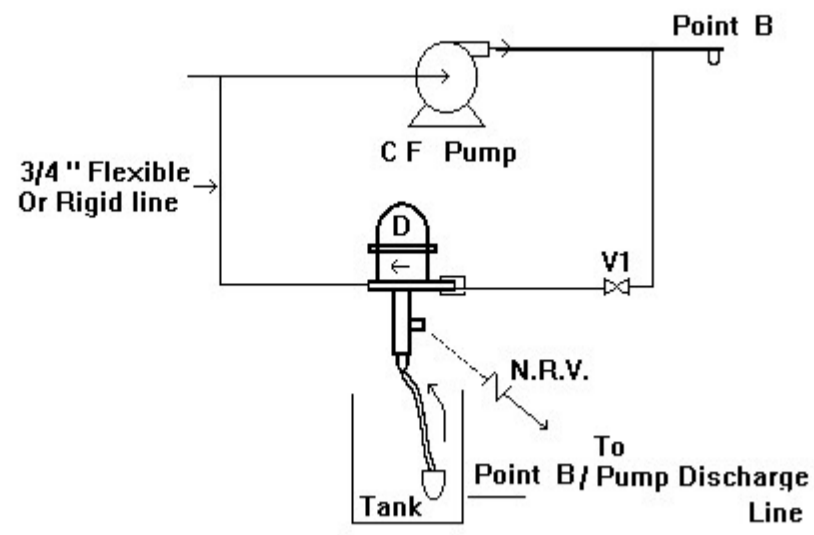


Alt - 2 = Alternative 2. D=Dosamatic ,V1 = 3/4" Ball Valve (Dose Setting Valve)

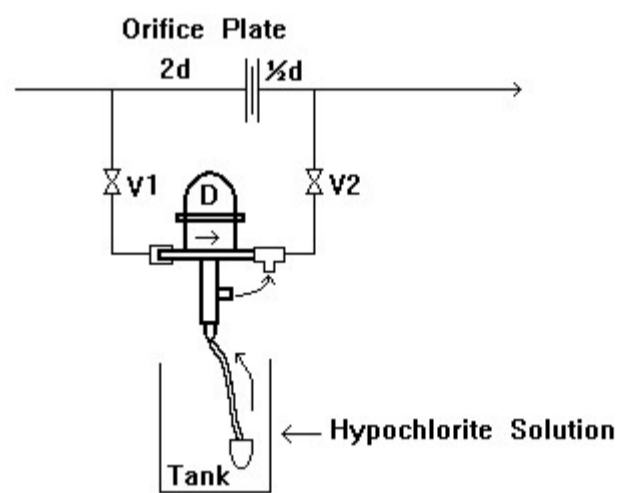
P1 & P2 = Pressures in respective lines. $P1 > P2$.

Note :- This installation is used when BFW temp. is more than 70° C

N.R.V. Shown in above Picture is Metal N.R.V. Kindly do not use Plastic N.R.V. Supplied along with Dosamatic.



D=Dosamatic ,V1 = 3/4" Ball Valve (Dose Setting Valve)



d = Pipe Dia. , V1 = Dose Setting Valve ,
 V1 & V2 = 3/4" Ball Valve